

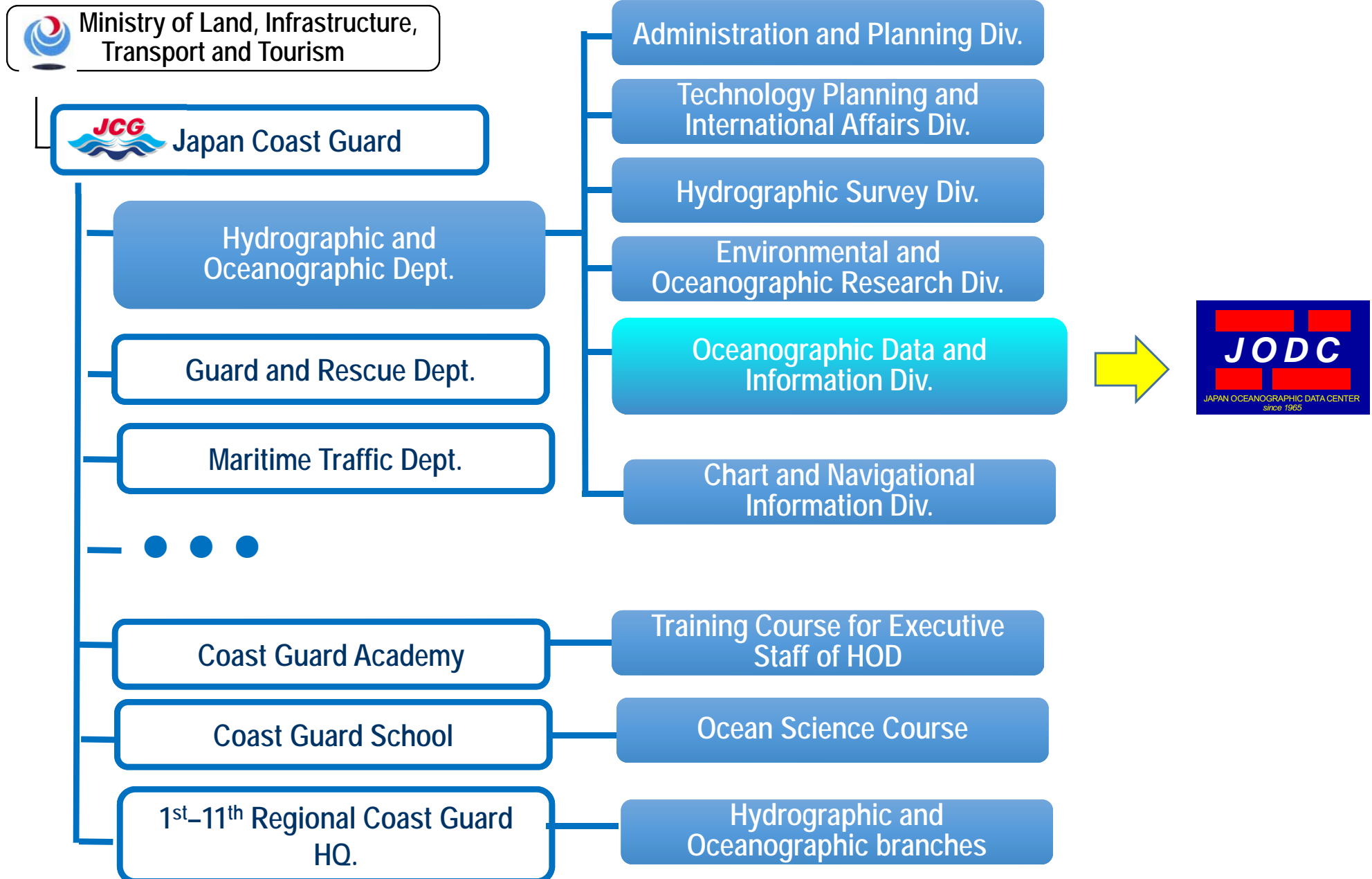
Introduction of JODC

October 4, 2016

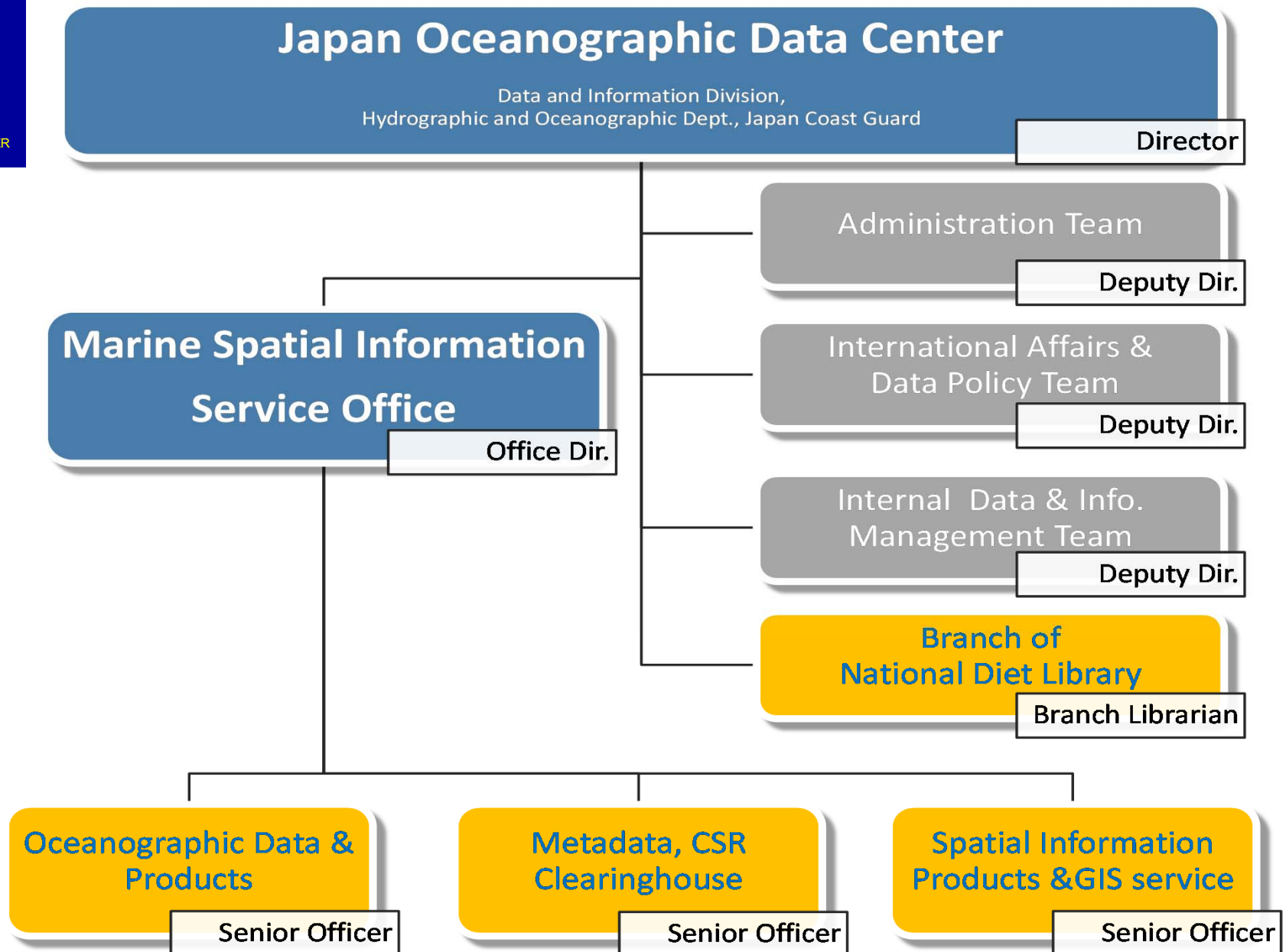
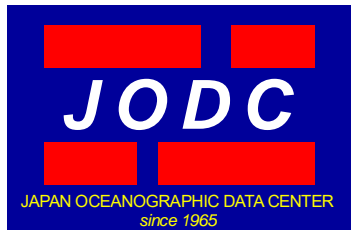
Marine Spatial Information Office,
Japan Oceanographic Data Center,
Oceanographic Data and Information Division,
Hydrographic and Oceanographic Department,
Japan Coast Guard

1. Japan Oceanographic Data Center (JODC) and related organizations
2. Data and Users status of JODC Service
3. Marine Cadastre

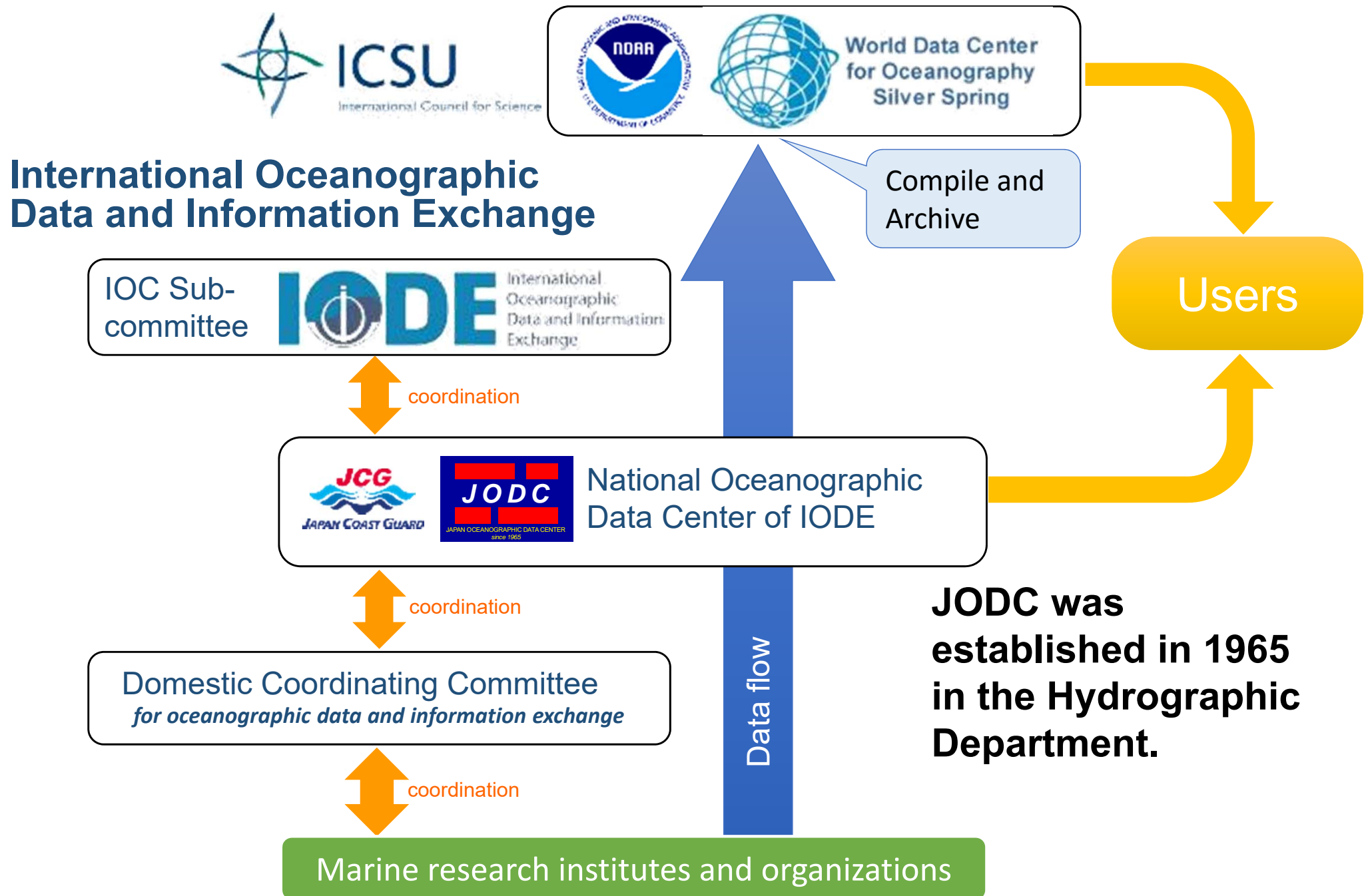
JODC and related Organization



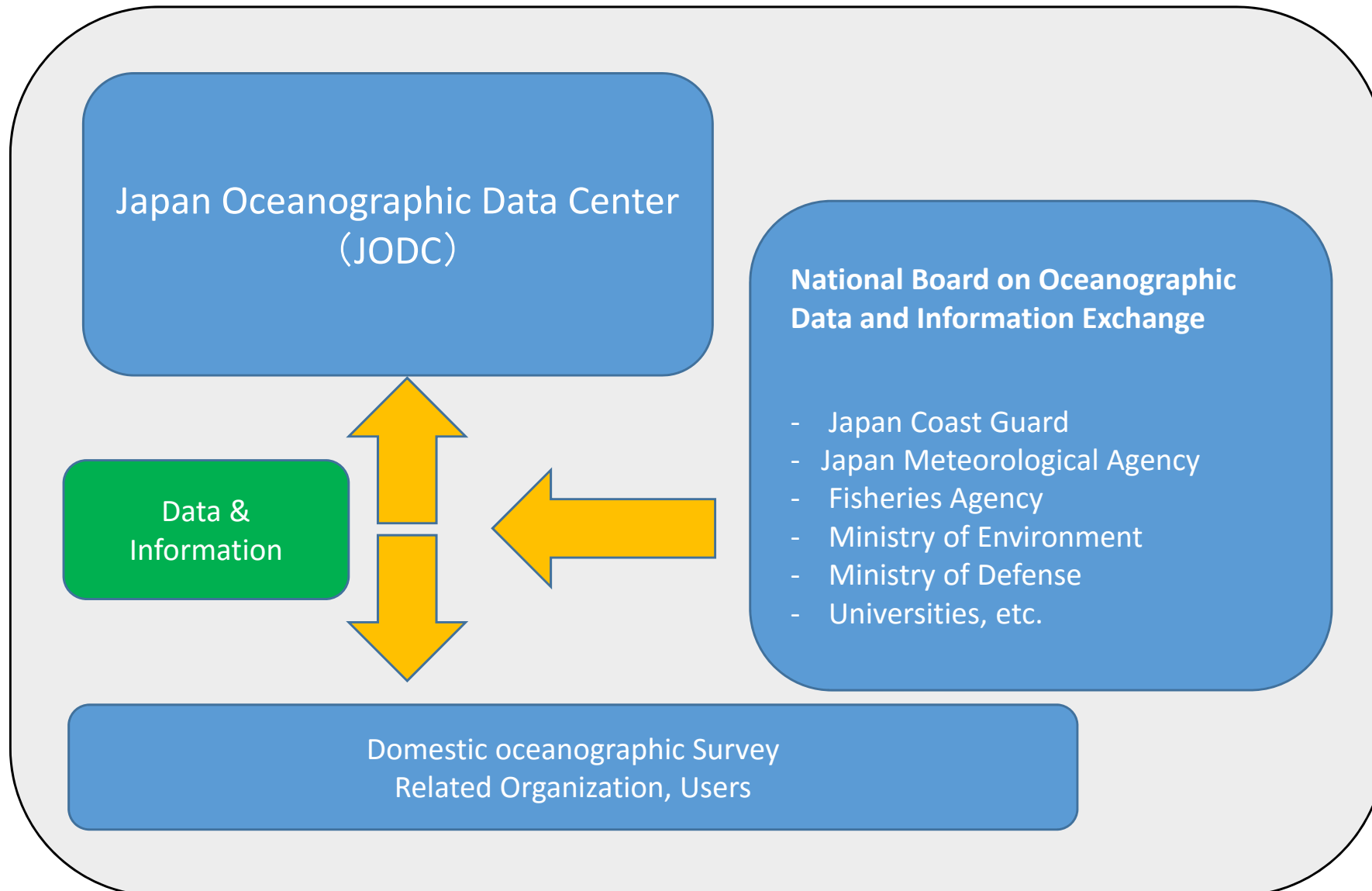
Structure of JODC



International Data Framework



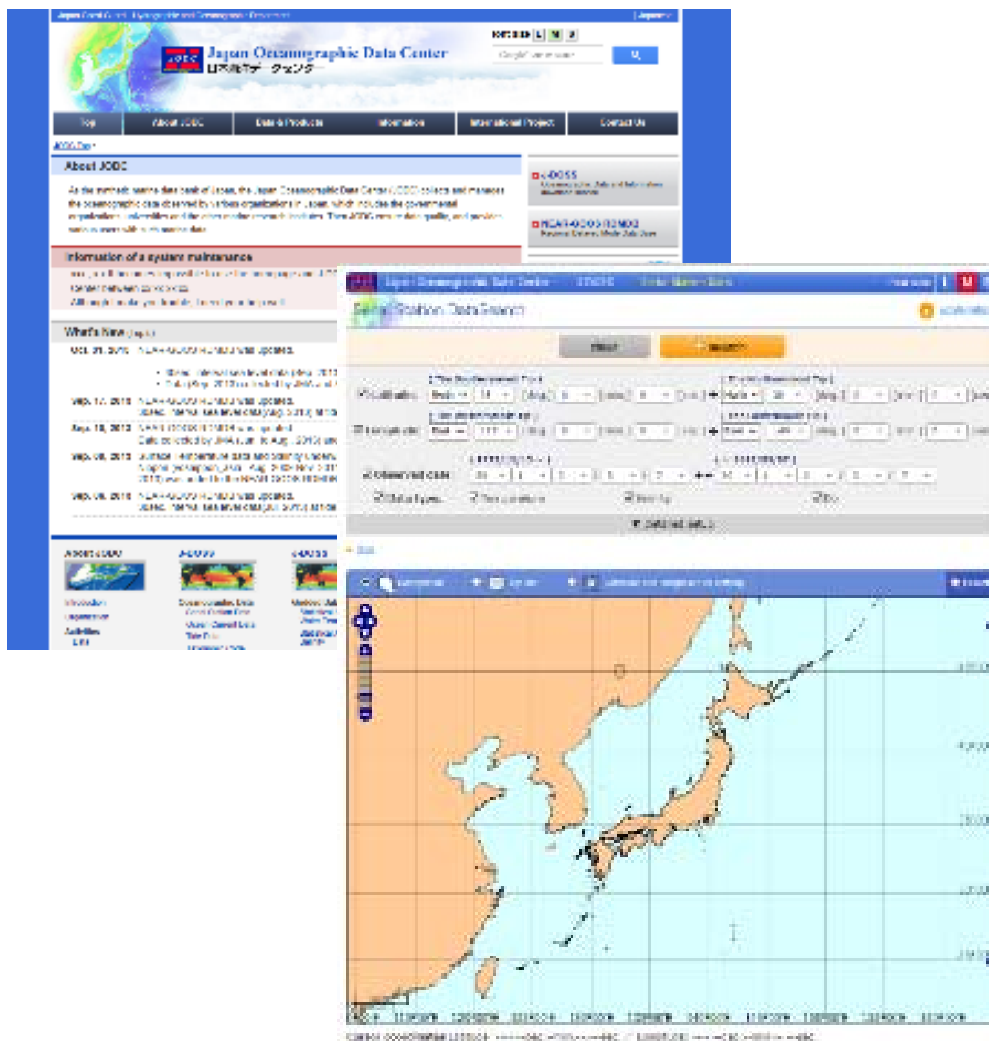
IODE Framework in Japan



JODC started the internet data service in 1995.

This type of internet service was the first among the NODCs in IODE.

JODC website and J-DOSS

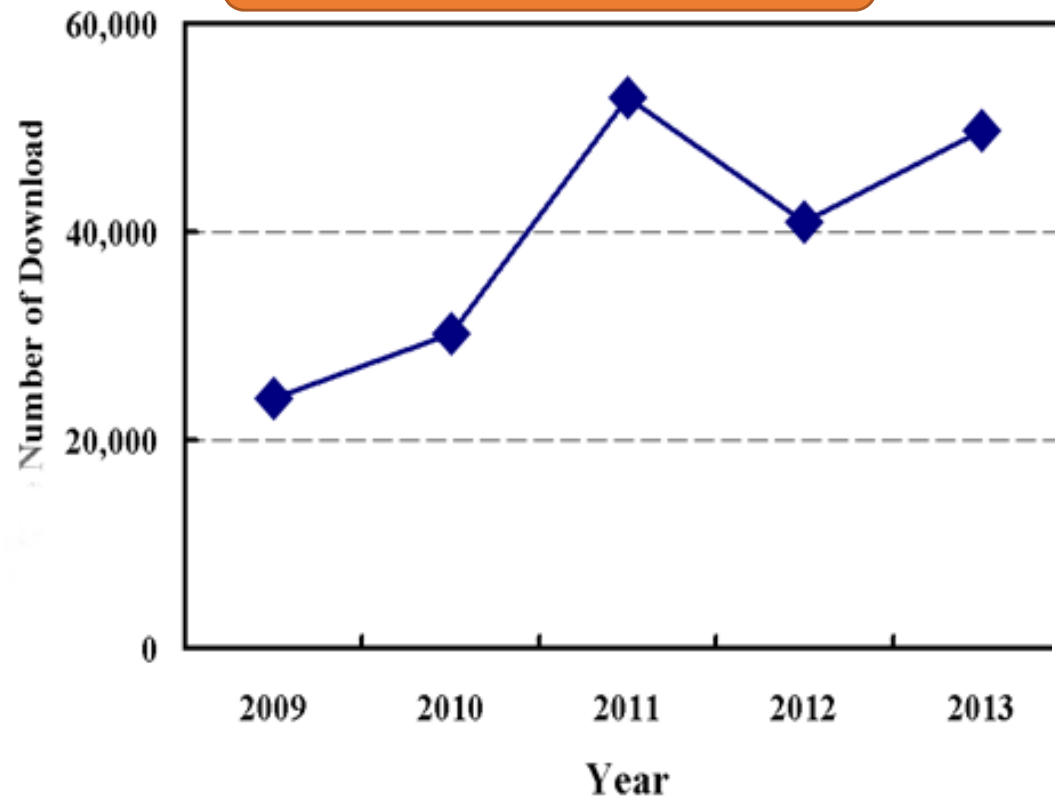


Data Items in J-DOSS

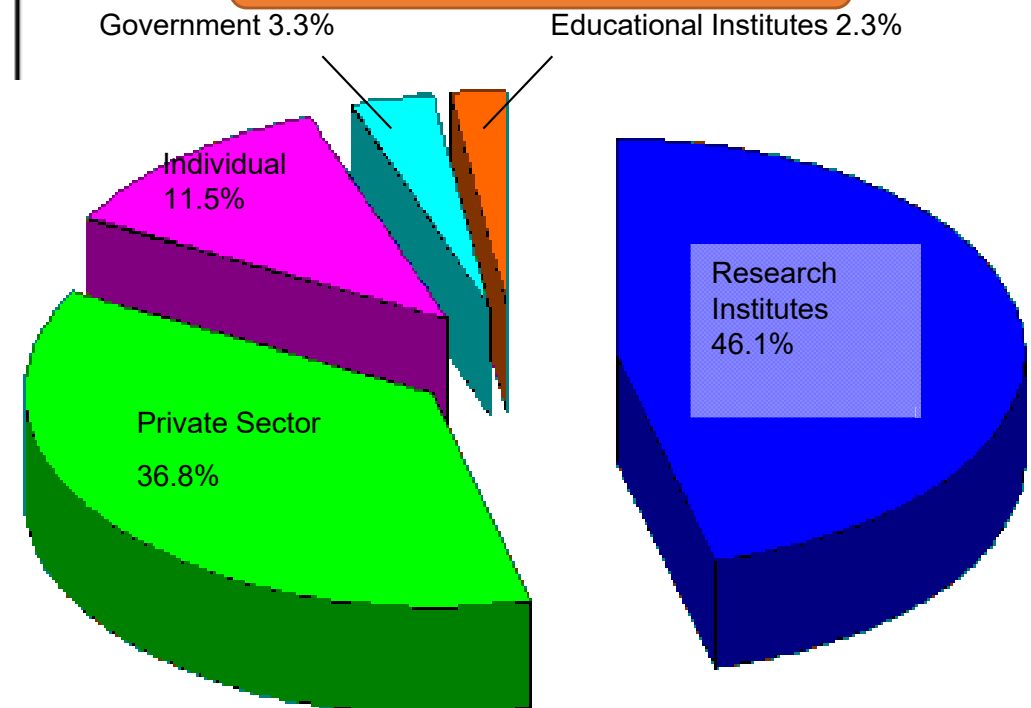
- **Serial Station Data : 13M st.**
- **Marine Organisms : 48k st.**
- **Ocean Current : 9M st.**
- **Tide (Sea Level) : 207 st.**
- **Tidal Current : 3900 st.**
- **Marine Pollution : 2100 st.**
- **Bathymetry and Marine Geophysics : 622 cruises**
- **Oceanographic Information**
 - Cruise Summary Report etc.
- **Gridded Data Products**
 - Temperature (1° grid)
 - Salinity (1° grid)
 - Ocean Current (1° grid)
 - Bathymetry (500m grid)

User Status of JODC Service

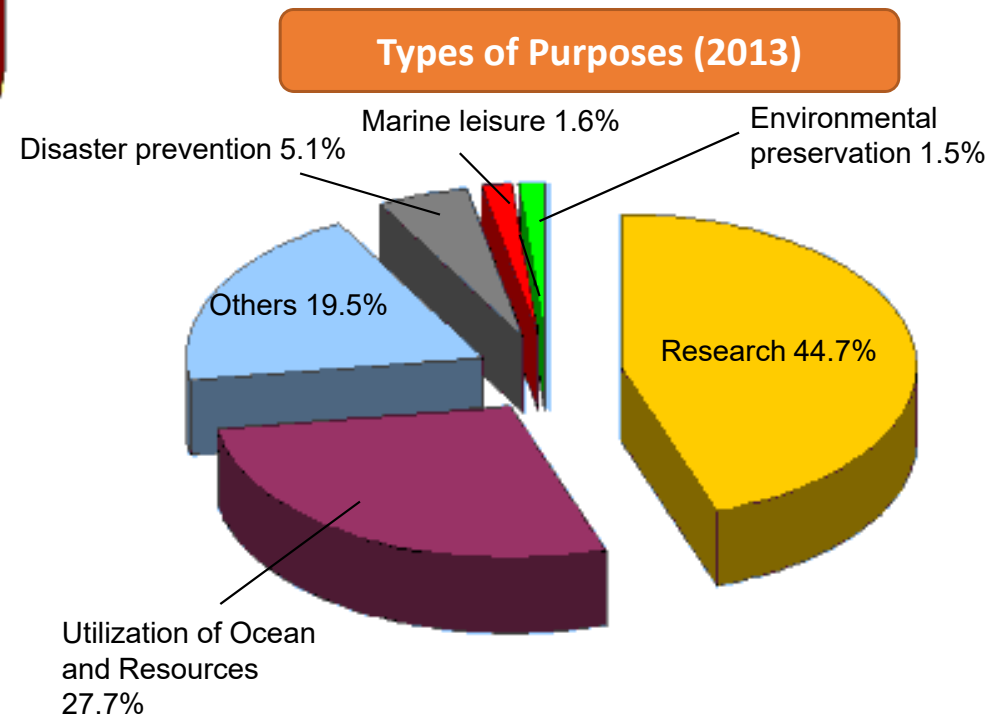
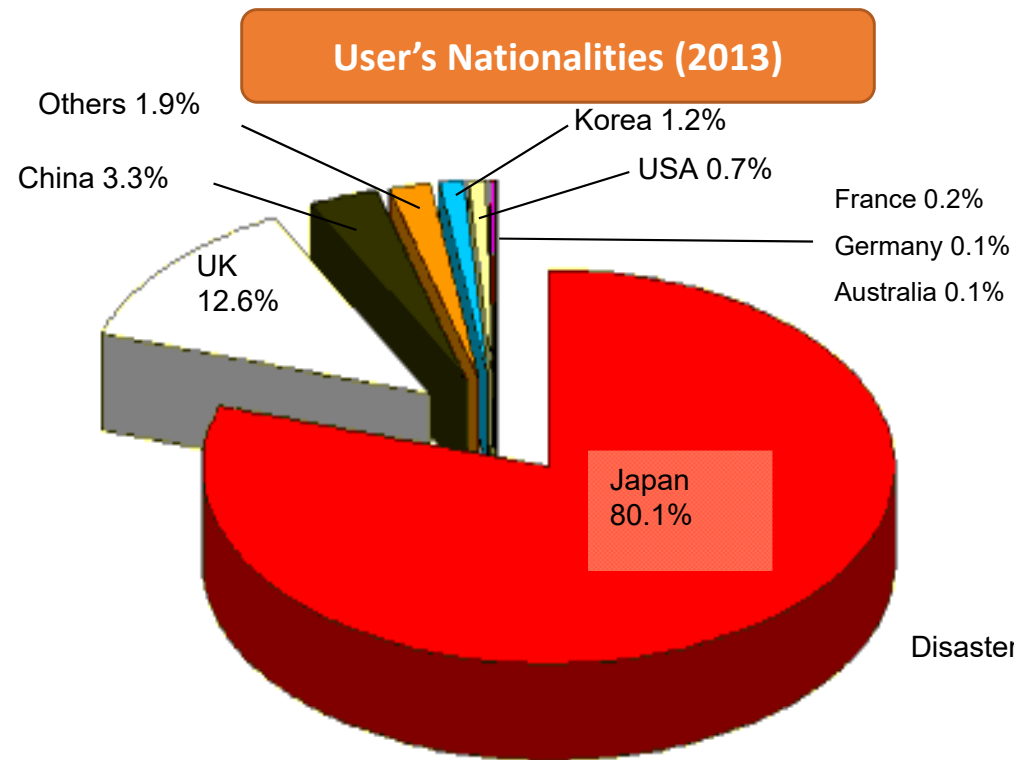
Numbers of Download



Types of Users (2013)

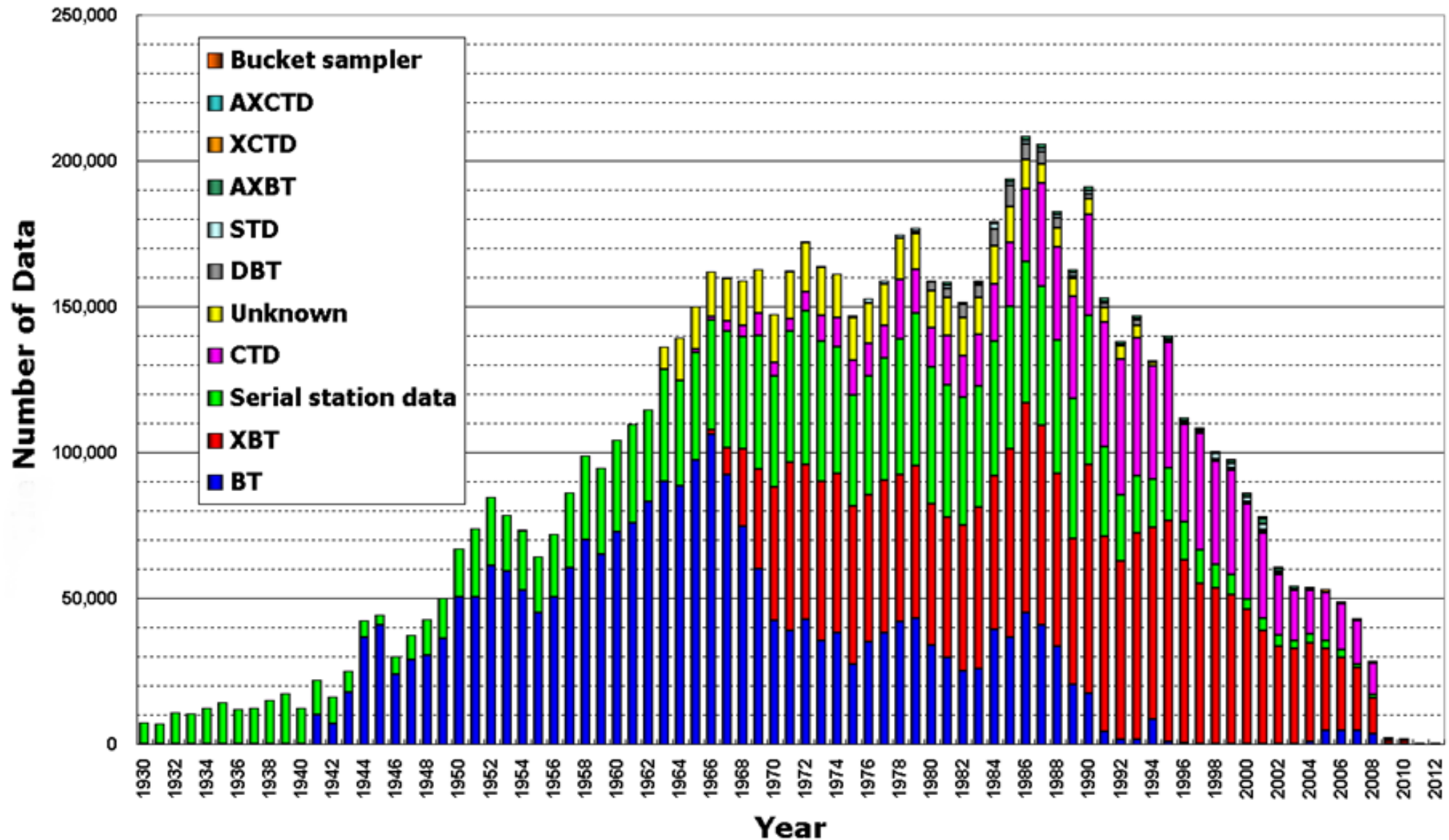


User Status of JODC



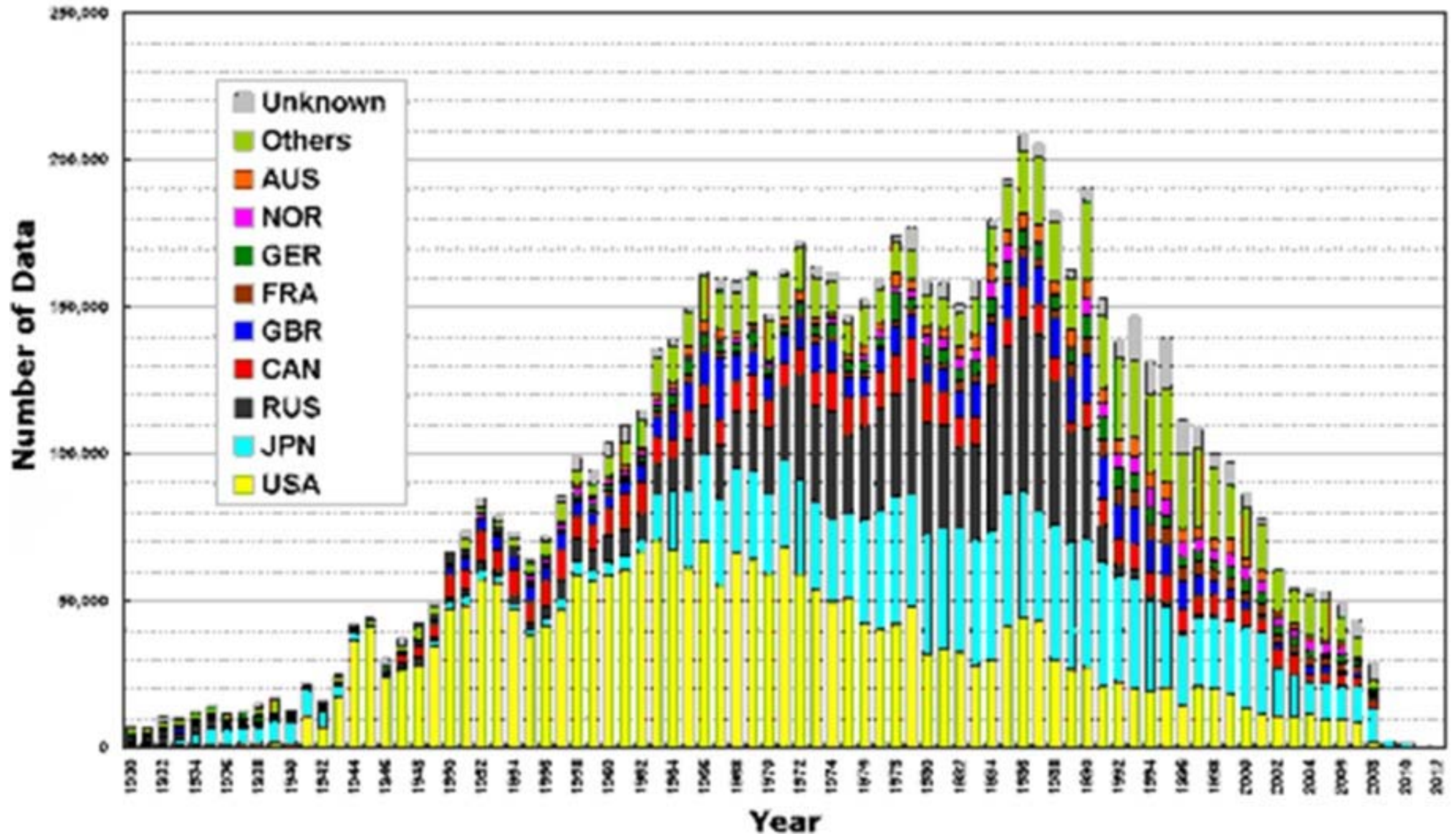


Instrument Types (1930-2012)





Data produced Countries (1930-2012)





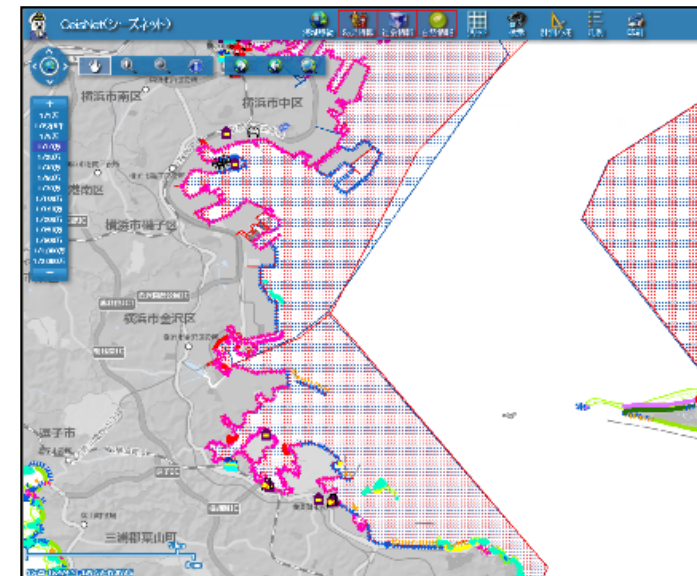
- **Assessment of environmental status**
- **Establishment of Action Plan**



CeisNet

Web-GIS based system to assist JCG and relevant organizations to cope with oil spill incident

- **GIS features from maps: ~35,000**
 - Fishery right areas
 - Fishery port areas
 - Bathing beaches
 - Seaweed beds
- **GIS features from docs: ~10,000**
 - Locations of equipment
 - Vessels, tracks, etc.
- **Identification of ESI (Environmental Sensitivity Index) for 33,000 km of Coastal line.**



Marine-related data and information

Related to Scientific data:

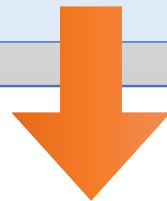
Oceanographic, Geological,
Chemical, ...

J-DOSS

Related to Human activities:

Infrastructure, regulation and
legislation, human activities, ...

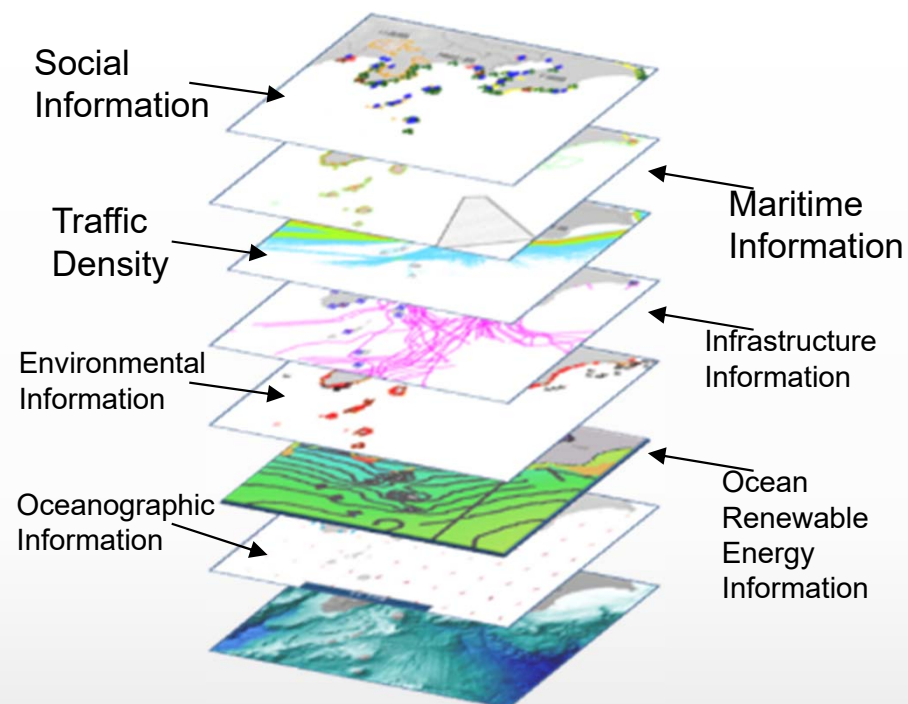
CeisNet



Integration

Marine Cadaster

Marine-related information



Leisure activities

Ocean development

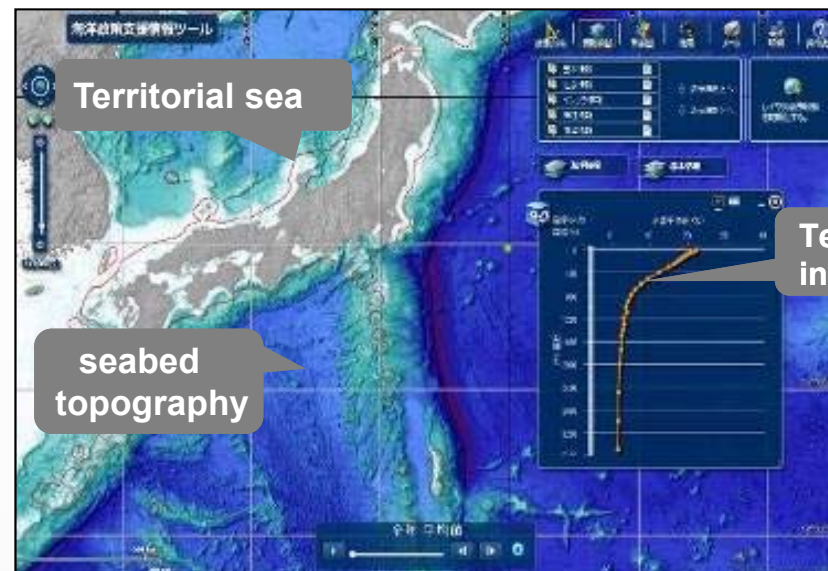
Environment protection



Users choose information and overlap them onto a map.

<http://www.kaiyoudaichou.go.jp/>

Snapshot of Marine Cadastre



More than 100 or more items are available

- **Social activity information**
 - Traffic volume, historic sites, natural treasures, fishery rights area, traffic route, fishery port area, U.S military exercises area, national park area,...
- **Infrastructure information**
 - Thermal power station, seabed pipes, cables, lights, Coast Guard offices,...
- **Marine environmental information**
 - Sank vessels, obstructions, birds habitats, turtles spawn area, beach,...
- **Oceanographic information**
 - Bathymetric data, temperature, salinity, currents, contour line of them

Items in blue are provided by the agencies other than JHOD

Thank you
for your kind attention!

